

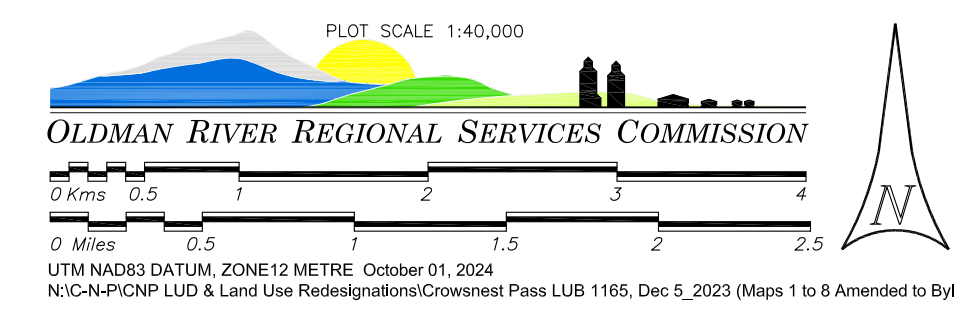
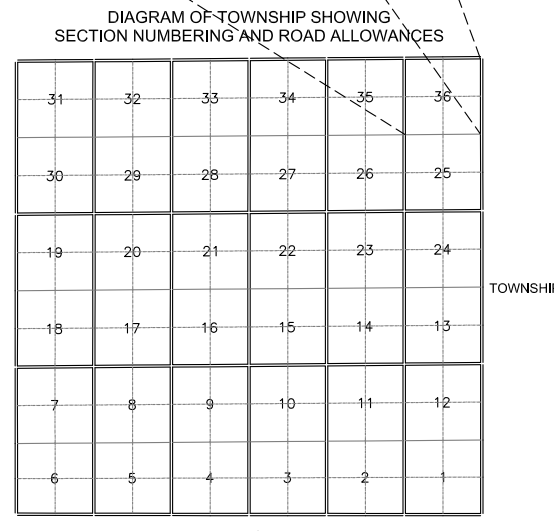
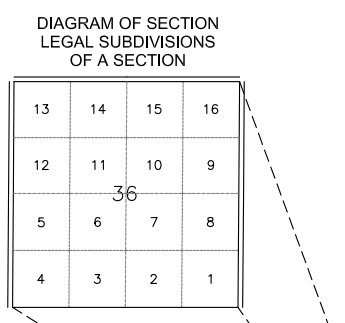
LAND USE DISTRICTS
 BYLAW NO. 1165, 2023; DECEMBER 5, 2023
 (Amended to and including Bylaw No. 1198, 2024)

- Restricted Development Area RDA
- Turtle Mountain Restricted Development Area DC-1
- See Detailed Maps 2 To 8

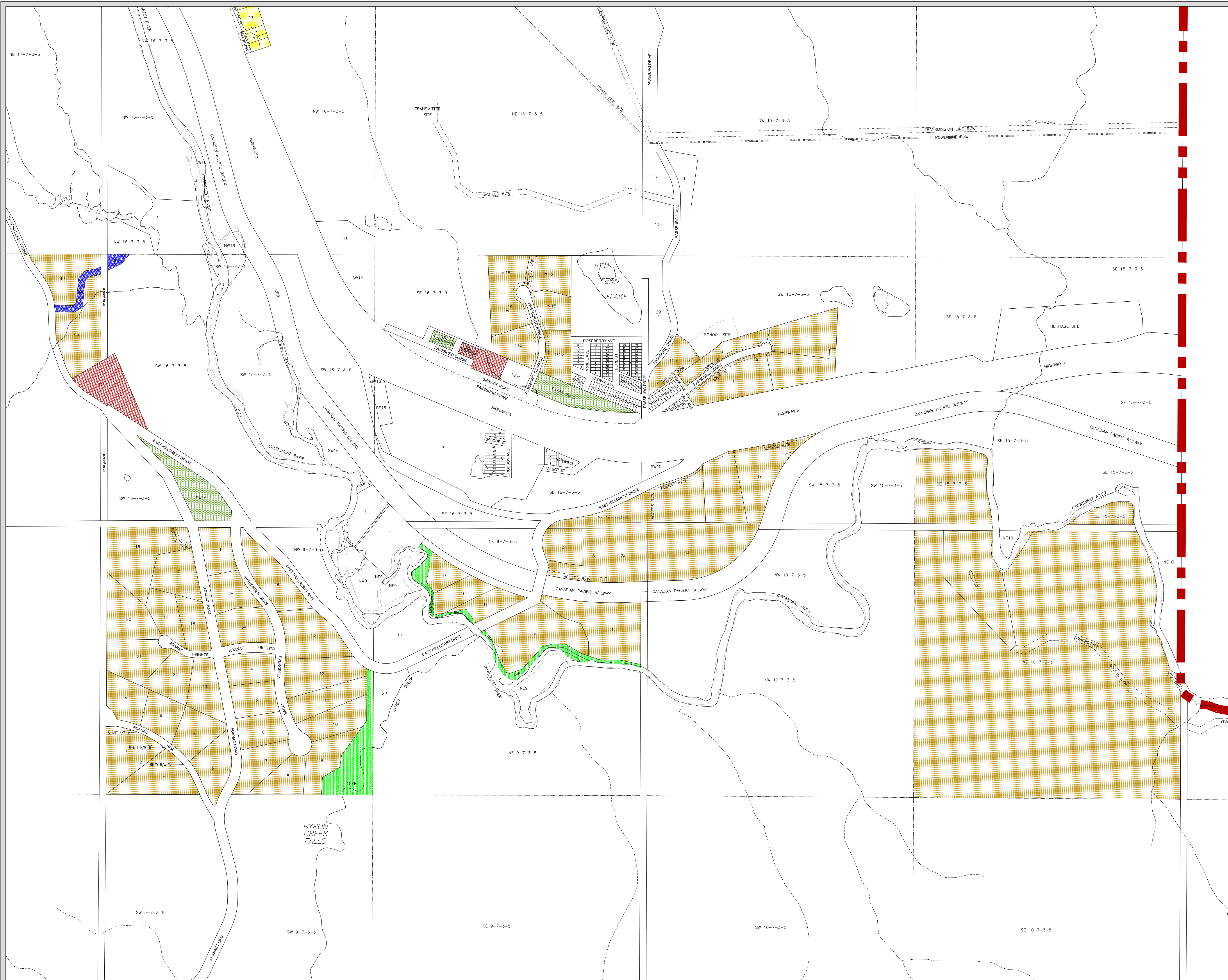
MAP 1

LEGEND:

- Forest Reserve Boundary
- Municipal Boundary (As Of May 20, 1998)
- Highway No. 3
- Railway CPR
- Other Roads / Streets
- Restricted Development Area



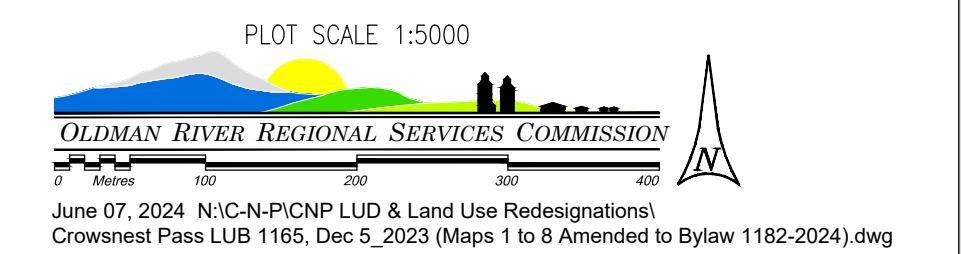
MUNICIPALITY OF CROWNEST PASS - PASSBURG AREA

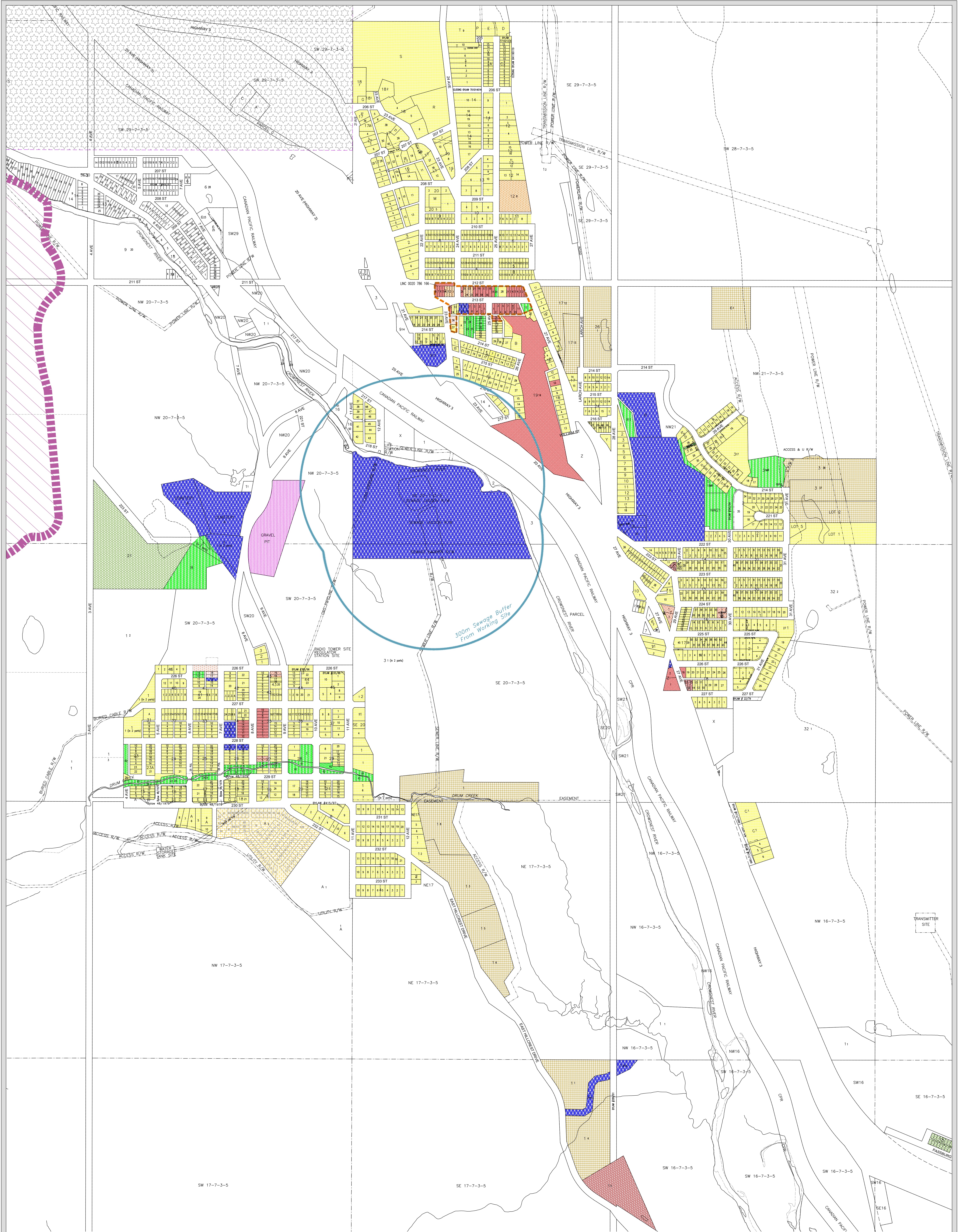


LAND USE DISTRICTS
 BYLAW NO. 1165, 2023; DECEMBER 5, 2023
 Amended to and including Bylaw No. 1182, 2024

- | | | |
|--|--|-------|
| | Residential | R-1 |
| | Grouped Country Residential | GCR-1 |
| | Retail Commercial | C-1 |
| | Drive-In Commercial | C-2 |
| | Recreation & Open Space | RO-1 |
| | Public | P-1 |
| | Non-Urban Tourism Accommodation and Recreation | NUTAR |
| | Non-Urban Area | NUA-1 |

MAP 2

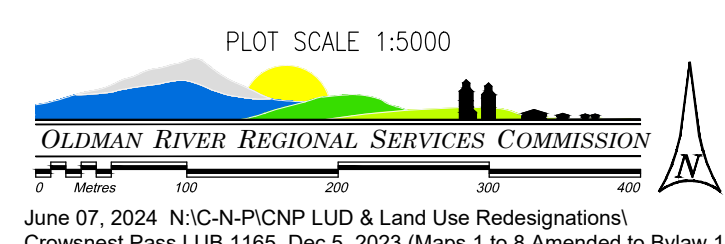




LAND USE DISTRICTS
 BYLAW NO. 1165, 2023; DECEMBER 5, 2023
 Amended to and including Bylaw No. 1182, 2024

- | | | |
|--|--|-------|
| | Residential | R-1 |
| | Duplex Or Semi-Detached Residential | R-2 |
| | Medium Density Residential | R-2A |
| | High Density Residential | R-3 |
| | Manufactured Home Communities | R-4 |
| | Grouped Country Residential | GCR-1 |
| | Retail Commercial | C-1 |
| | Drive-In Commercial | C-2 |
| | Industrial | I-1 |
| | Recreation & Open Space | RO-1 |
| | Public | P-1 |
| | Non-Urban Tourism Accommodation and Recreation | NUTAR |
| | Non-Urban Area | NUA-1 |
| | Turtle Mountain Restricted Development Area | DC-1 |
| | Restricted Development Area | RDA |
| | Historic Commercial Areas Overlay | |

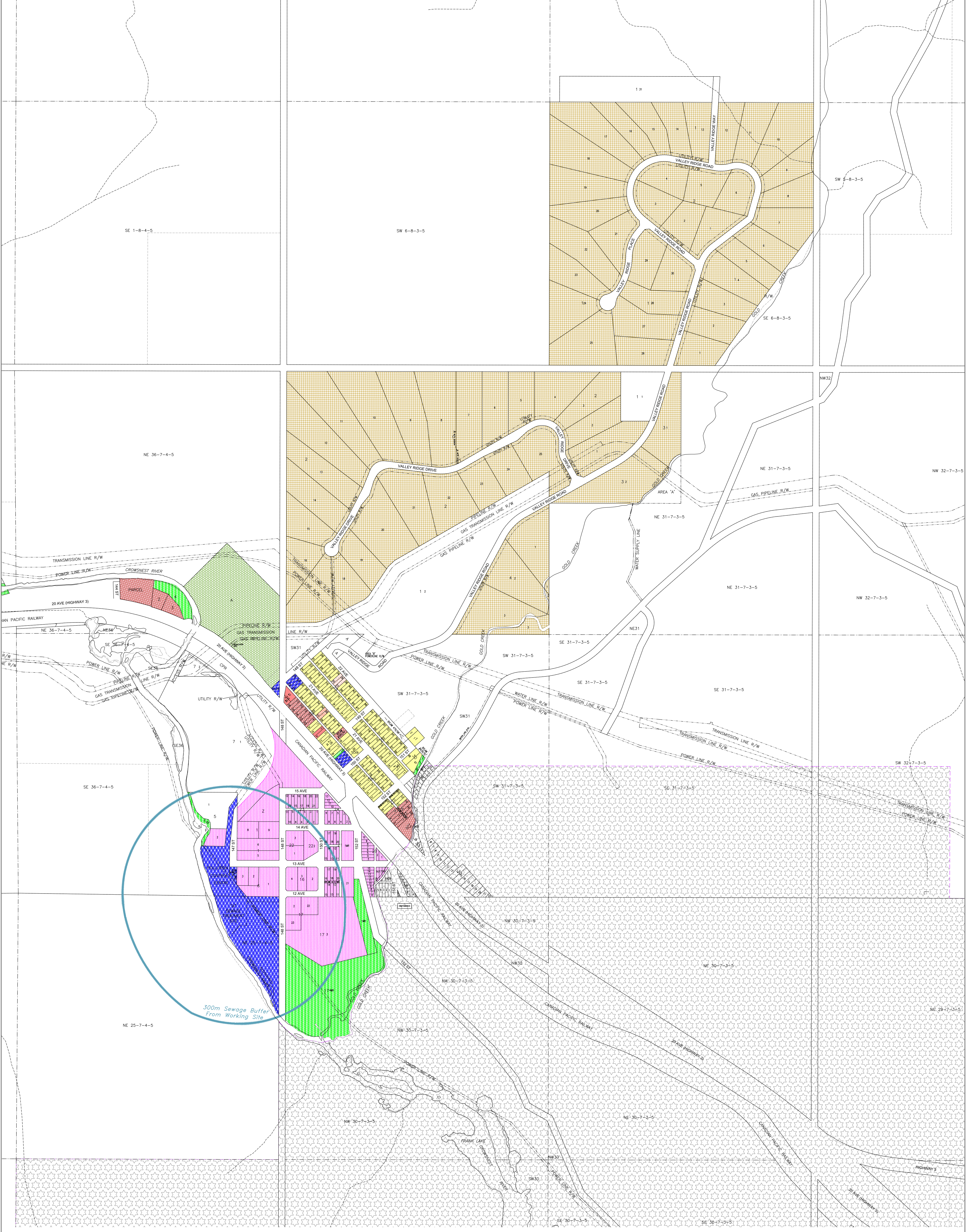
MAP 3



June 07, 2024 N:\C-N\PICNP LUD & Land Use Redesignations\ Crownsnest Pass LUB 1165, Dec 5, 2023 (Maps 1 to 8 Amended to Bylaw 1182-2024).dwg

MUNICIPALITY OF CROWSNEST PASS
- BELLEVUE / HILLCREST AREA

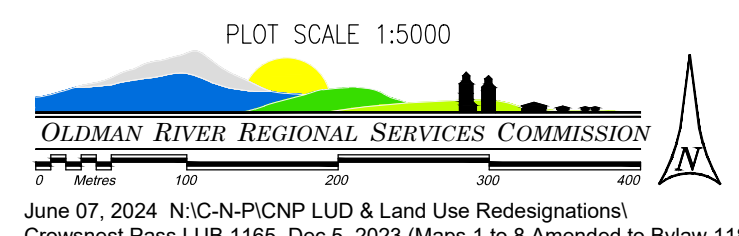
MUNICIPALITY OF CROWSNEST PASS
 BELLEVUE / HILLCREST LAND USE DISTRICT MAP 3



LAND USE DISTRICTS
 BYLAW NO. 1165, 2023; DECEMBER 5, 2023
 Amended to and including Bylaw No. 1182, 2024.

- | | | |
|---|--|-------|
|  | Residential | R-1 |
|  | Duplex Or Semi-Detached Residential | R-2 |
|  | Medium Density Residential | R-2A |
|  | Grouped Country Residential | GCR-1 |
|  | Retail Commercial | C-1 |
|  | Drive-In Commercial | C-2 |
|  | Industrial | I-1 |
|  | Recreation & Open Space | RO-1 |
|  | Public | P-1 |
|  | Non-Urban Tourism Accommodation and Recreation | NUTAR |
|  | Non-Urban Area | NUA-1 |
|  | Restricted Development Area | RDA |

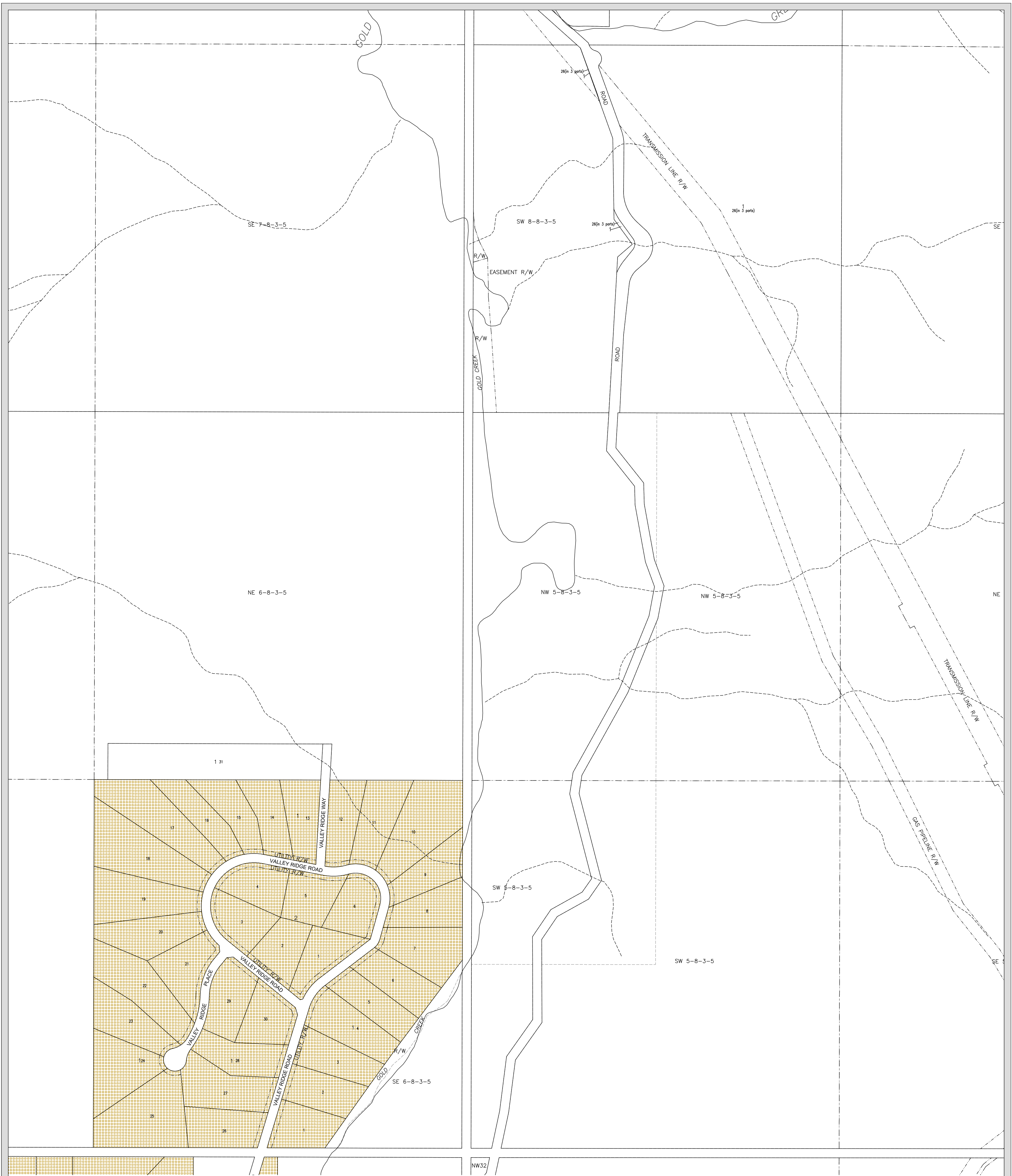
MAP 4



June 07, 2024 N:\C-N\P\CNP LUD & Land Use Redesignations\ Crow'snest Pass LUB 1165, Dec 5, 2023 (Maps 1 to 8 Amended to Bylaw 1182-2024).dwg

MUNICIPALITY OF CROWSNEST PASS
- FRANK AREA

MUNICIPALITY OF CROWSNEST PASS
 FRANK LAND USE DISTRICT MAP 4



LAND USE DISTRICTS
 BYLAW NO. 1165, 2023; DECEMBER 5, 2023


MUNICIPALITY OF
 CROWSNEST PASS
 - FRANK AREA

 Grouped Country Residential GCR-1
 Non-Urban Area NUA-1

MAP 4A

MUNICIPALITY OF CROWSNEST PASS
 FRANK LAND USE DISTRICT MAP 4A

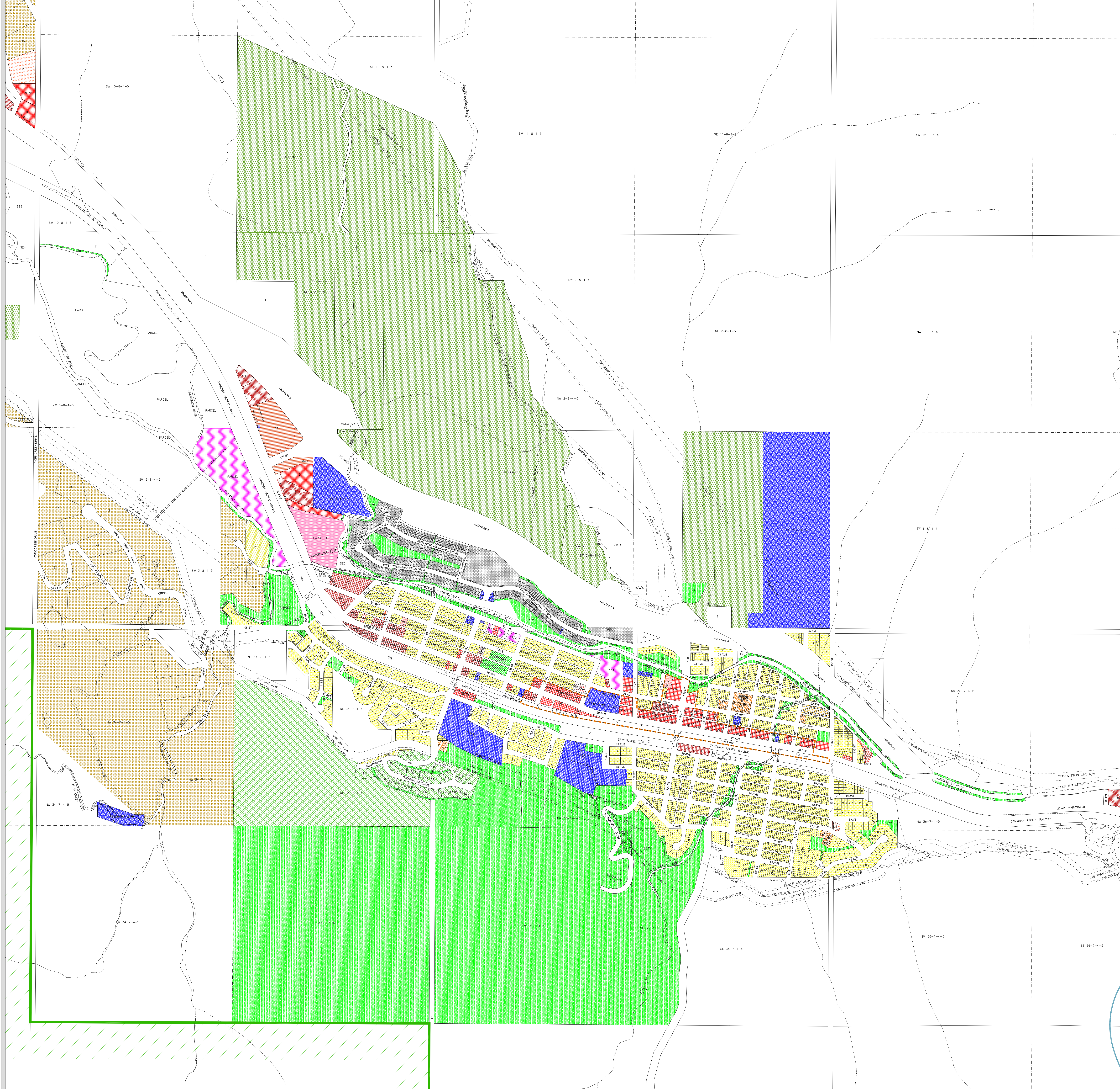
PLOT SCALE 1:5000



OLDMAN RIVER REGIONAL SERVICES COMMISSION

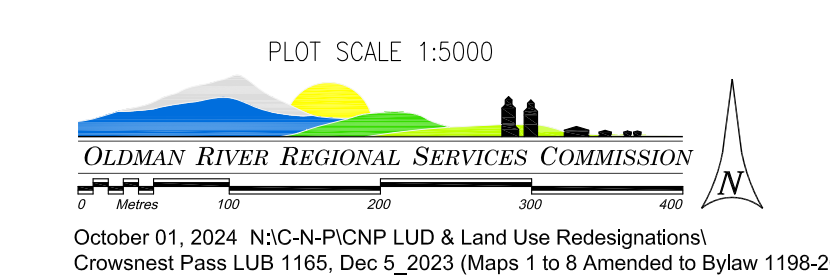
January 08, 2024 N:\C-N-P\ICNP LUD & Land Use Redesignations\
 Crowsnest Pass LUB 1165, Dec 5_2023 (Maps).dwg

MUNICIPALITY OF
CROWSNEST PASS
- BLAIRMORE AREA

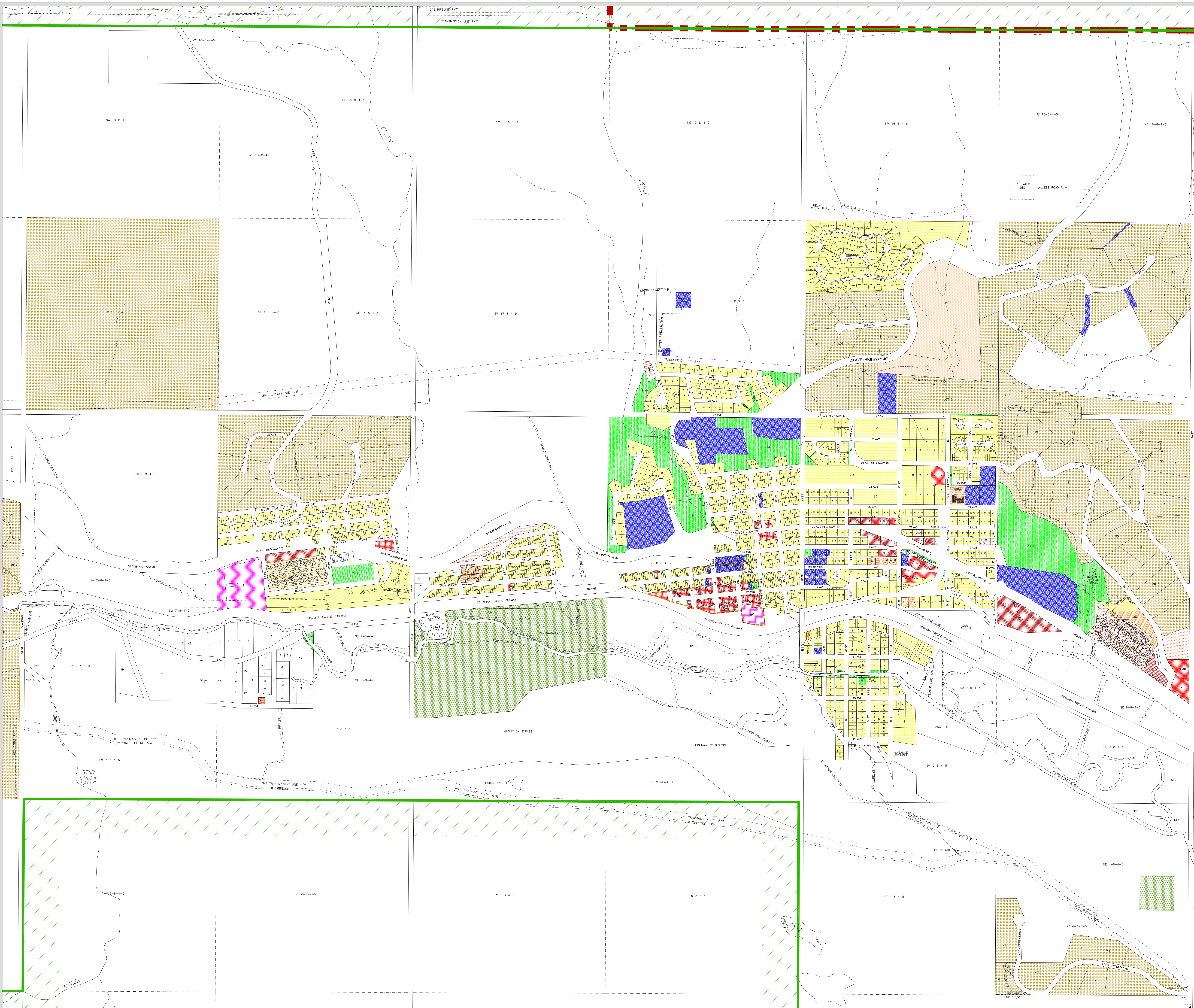


- LAND USE DISTRICTS**
BYLAW NO. 1165, 2023; DECEMBER 5, 2023
Amended to and including Bylaw No. 1197, 2024
- | | | |
|--|--|-------|
| | Residential | R-1 |
| | Duplex Or Semi-Detached Residential | R-2 |
| | Medium Density Residential | R-2A |
| | High Density Residential | R-3 |
| | Manufactured Home Communities | R-4 |
| | Narrow Lot Residential | R-5 |
| | Grouped Country Residential | GCR-1 |
| | Retail Commercial | C-1 |
| | Drive-In Commercial | C-2 |
| | Comprehensive Commercial | C-3 |
| | Comprehensive Mixed Use District | CM-1 |
| | Cannabis Retail Commercial | C-4 |
| | Industrial | I-1 |
| | Recreation & Open Space | RO-1 |
| | Public | P-1 |
| | Non-Urban Tourism Accommodation and Recreation | NUTAR |
| | Urban Tourism Accommodation and Recreation | LUTAR |
| | Non-Urban Area | NUA-1 |
| | Comprehensive Ski Village | CSV |
| | No Land Use Assigned | |
| | Historic Commercial Areas Overlay | |

MAP 5



MUNICIPALITY OF CROWSNEST PASS
- COLEMAN AREA



LAND USE DISTRICTS
 BYLAW NO. 1165, 2023; DECEMBER 5, 2023
 Amended to and including Bylaw No. 1194, 2024

	Residential	R-1
	Duplex Or Semi-Detached Residential	R-1A
	Medium Density Residential	R-2
	High Density Residential	R-2A
	Manufactured Home Communities	R-3
	Grouped Country Residential	R-4
	Retail Commercial	GCR-1
	Drive-In Commercial	C-1
	Industrial	C-2
	Recreation & Open Space	I-1
	Public	RO-1
	Non-Urban Tourism Accommodation and Recreation	P-1
	Non-Urban Area	NUTAR
	Historic Commercial Areas Overlay	NUA-1

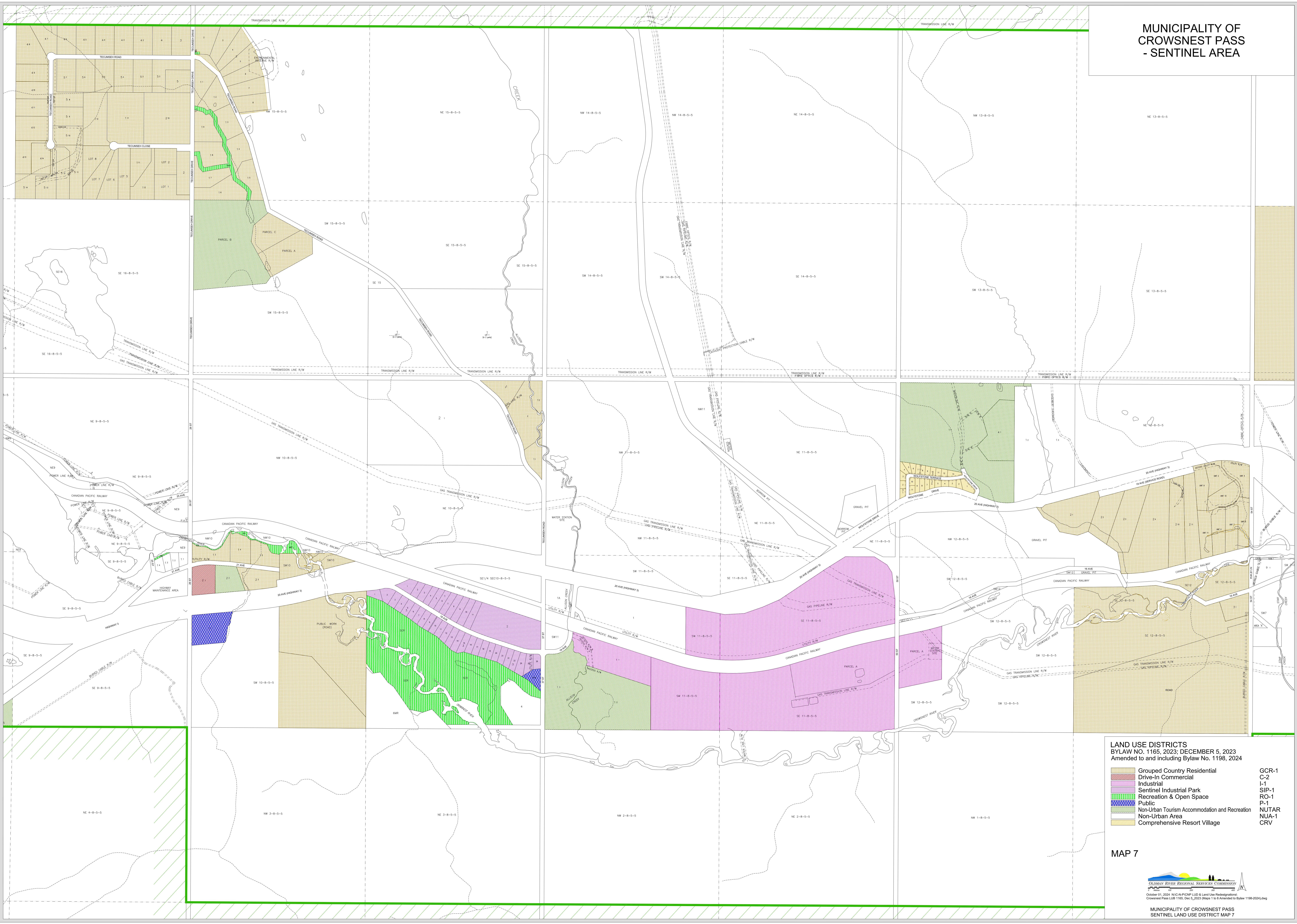
MAP 6

PLOT SCALE 1:5000


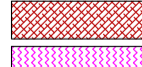
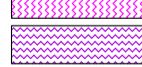
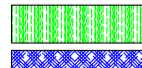
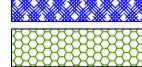




October 01, 2024 NCC-A-PCHP LUD & Land Use Rezonification
 Crownsnest Pass LUD 1165, Dec 5, 2023 (Map 1 to 8 Amended by Bylaw 1194-2024).jmg

MUNICIPALITY OF CROWSNEST PASS
COLEMAN LAND USE DISTRICT MAP 6

MUNICIPALITY OF
CROWSNEST PASS
- SENTINEL AREA

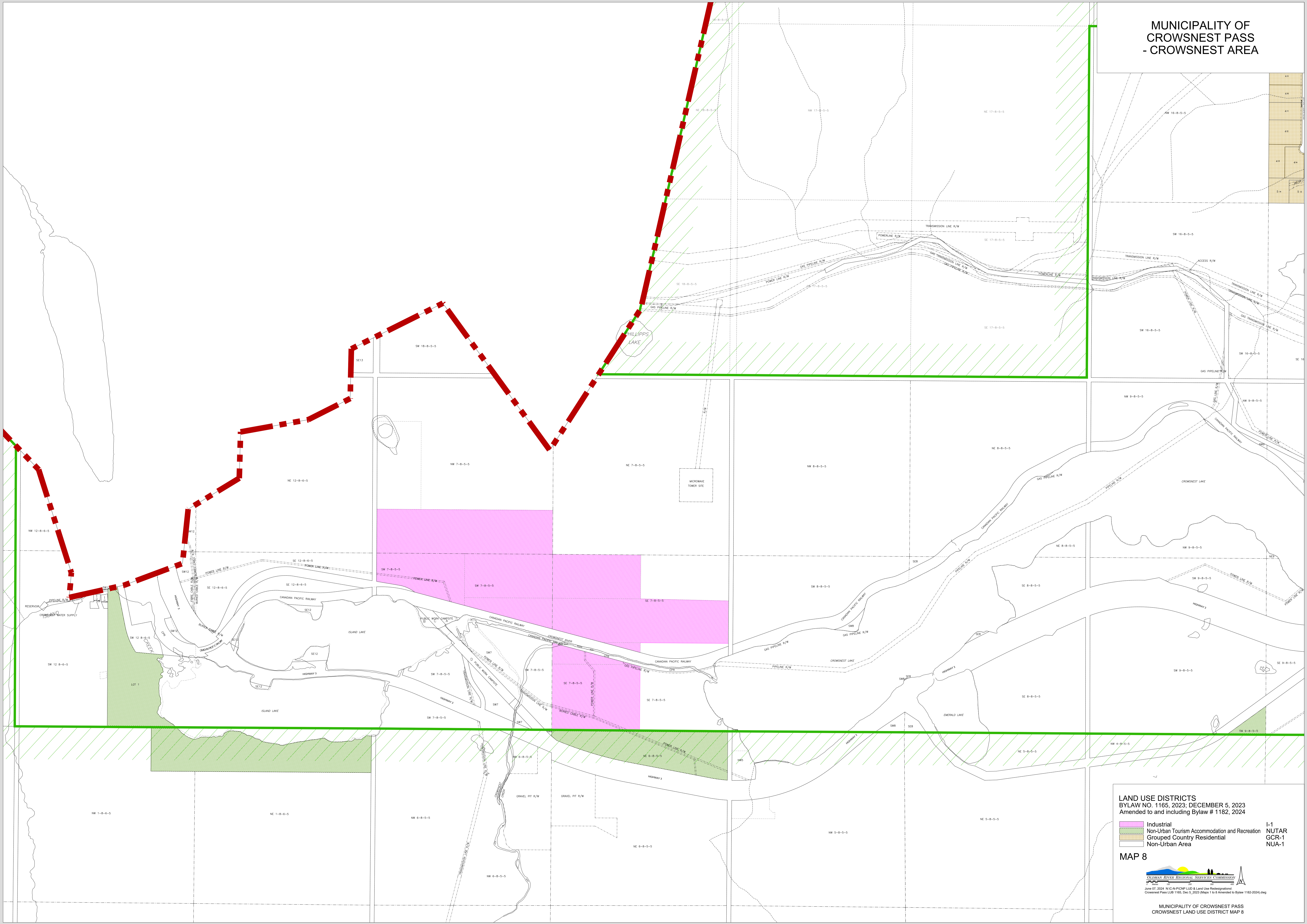


LAND USE DISTRICTS
BYLAW NO. 1165, 2023; DECEMBER 5, 2023
 Amended to and including Bylaw No. 1198, 2024

	Grouped Country Residential	GCR-1
	Drive-In Commercial	C-2
	Industrial	I-1
	Sentinel Industrial Park	SIP-1
	Recreation & Open Space	RO-1
	Public	P-1
	Non-Urban Tourism Accommodation and Recreation	NUTAR
	Non-Urban Area	NUA-1
	Comprehensive Resort Village	CRV

MAP 7

MUNICIPALITY OF
CROWSNEST PASS
- CROWSNEST AREA



LAND USE DISTRICTS
 BYLAW NO. 1165, 2023; DECEMBER 5, 2023
 Amended to and including Bylaw # 1182, 2024

	Industrial	I-1
	Non-Urban Tourism Accommodation and Recreation	NUTAR
	Grouped Country Residential	GCR-1
	Non-Urban Area	NUA-1

MAP 8

OLDMAN RIVER REGIONAL SERVICES COMMISSION
 Jan 17, 2024 NRC/ARPC/RLC & Land Use Reorganization
 Crowsnest Pass LUB 1165, Dec 5, 2023 (Maps 1 to 8 Amended to Bylaw 1182-2024).dwg